

SOCCER TRAINING SESSION

Presented by Dr. Tony Rizzo





Training Session



LIGHTNING AND/OR THUNDER

1. Proactive Plan upon arrival
2. Evacuation plan
3. How to restart the game.

These guidelines provide a default policy to those responsible or sharing duties for making decisions concerning the suspension and restarting of practices and contests based on the presence of lightning or thunder.



1. PROACTIVE PLANNING

- Assign staff to monitor local weather conditions before and during practices and contests.

2. EVACUATION PLAN

- Identify appropriate nearby safer areas and determine the amount of time needed to get everyone to a designated safer area.
- A designated safer place is a substantial building with plumbing and wiring where people live or work, such as a school, gymnasium, or library. A fully enclosed (not convertible or soft top) metal car or school bus is an alternate, safer place from the threat of lightning.

3. HOW TO RESTART

a. When thunder is heard, or lightning is seen*, the leading edge of the thunderstorm is close enough to strike your location with lightning. Suspend play for at least 30 minutes and vacate the outdoor activity to the previously designated safer area immediately.

b. 30-minute rule: Once play has been suspended, wait at least 30 minutes after the last thunder is heard, or lightning is witnessed* before resuming play.

*At night, under certain atmospheric conditions, lightning flashes may be seen from distant storms. In these cases, it may be safe to continue an event. The storm may not pose a threat if no thunder can be heard and the flashes are low on the horizon. Independently verified lightning detection information would help eliminate any uncertainty.

3. HOW TO RESTART

c. Any subsequent thunder or lightning* after the beginning of the 30-minute count will reset the clock, and another 30-minute count should begin.

d. When independently validated lightning-detection devices or mobile phone apps are available, this technology could be used to assist in deciding to suspend play if a lightning strike is noted to be within 10 miles of the event location. However, it would be best if you never depended on these devices' reliability; thus, hearing thunder or seeing lightning* should always precede information from a mobile app or lightning-detection device.

*At night, under certain atmospheric conditions, lightning flashes may be seen from distant storms. In these cases, it may be safe to continue an event. The storm may not pose a threat if no thunder can be heard and the flashes are low on the horizon. Independently verified lightning detection information would help eliminate any uncertainty.



Training Session



SIGNALS



NFHS Official

Direct Free Kick



Direct free kick
(points in direction of kick)



Kicking



Tripping



Holding



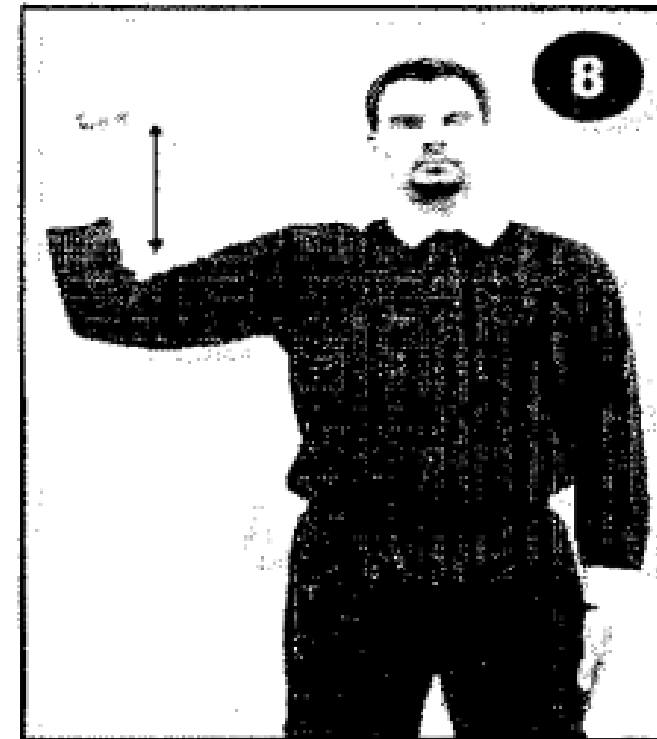
Handling



Pushing



Striking
(back and forth)



Jumping at



Reckless or
dangerous
charging

Indirect Free Kick



Indirect
free kick



Offside



Goalkeeper vio-
lation or second
touching





Dangerous Play



Obstruction



General

15



Play On

16



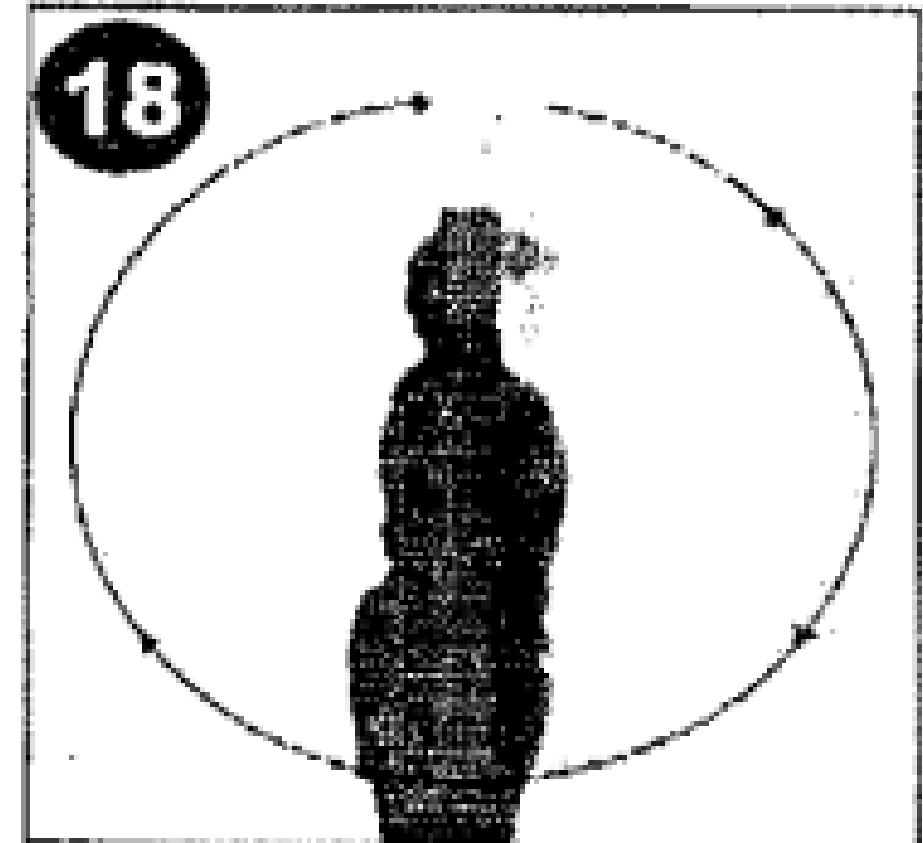
Dead Ball

17



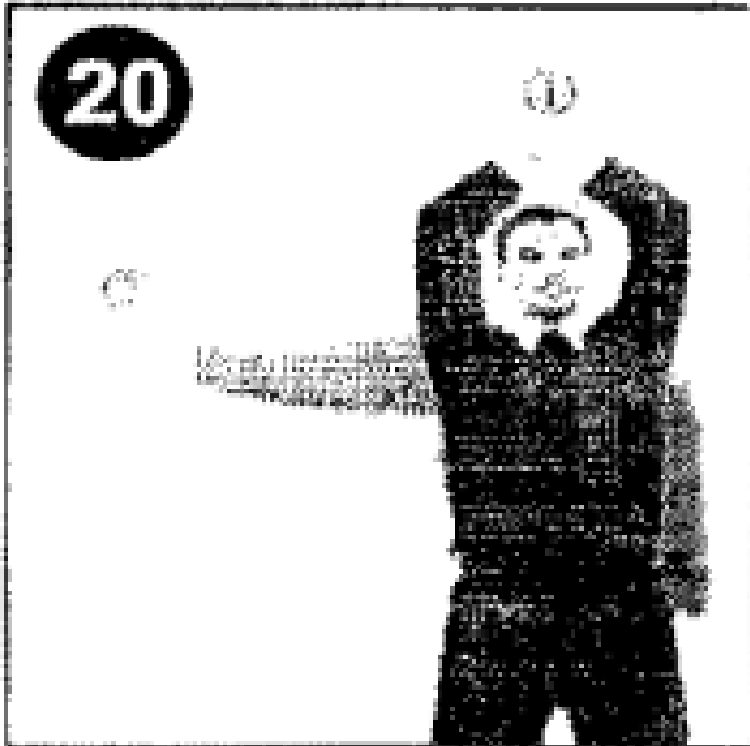
Timeout

18



(Wind-up to
start clock)





Penalty Kick
(point to spot),
Goal Kick
(point to goal
area)

Goal

No Goal

Caution/
ejection



Corner Kick
(point to spot)



DISQUALIFICATIONS

General Rule. *Preamble*

Sportsmanship is a core principle in interscholastic athletics. Actions which are unethical and/or intended to demean, embarrass, intimidate or injure opposing contestants, Teams, spectators and/or officials are considered unsportsmanlike and will not be tolerated since they are contrary to the purposes of PIAA and convey lessons incompatible with the reason why high school sports exist

Mandatory
(one Game Suspension)
Supplemental
(two Game Suspension)





MANDATORY DISQUALIFICATIONS

One Game Suspension Any Coach and/or contestant who, while Coaching or competing for a PIAA member school, is ejected from a Contest by a state high school association recognized and/or registered official in that sport for unsportsmanlike conduct or flagrant misconduct is disqualified from Coaching and/or participating for the remainder of the day and in all Contests on the next Contest day of the same level (varsity, junior varsity, or otherwise) of competition from which the Coach and/or contestant was previously disqualified. For a Coach, participation in the next Contest includes any contact by the Coach with members of the Team, including other Coaches, between the time that the Team arrives at the Contest site and the conclusion of the last Contest of the day. The Principal must direct the Coach not to attend all of the Contest(s).



SUPPLEMENTAL DISQUALIFICATIONS

What is it? Two Game Suspension of Any Coach, team personnel, and/or contestant who is ejected from a Contest by a state high school association recognized and/or registered official and a component of the ejection is any of the following actions on the next slide:



SUPPLEMENTAL DISQUALIFICATIONS

Actions: Confronting an official, coach, or contestant; physically contacting an official, coach, or contestant; directing foul or vulgar language/gestures toward an official, coach, contestant, or spectator(s); using ethnic or racially insensitive comments will be disqualified from coaching and/or participating for the remainder of the day and for the next two Contests including all Contests on the next two Contest days of the same level (varsity, junior varsity, or otherwise) of competition from which the Coach, team personnel and/or contestant was previously disqualified.



SUPPLEMENTAL DISQUALIFICATIONS

How Should This Be Done? The jurisdiction of the official(s) to apply and enforce this rule begins upon the official's arrival at the Contest site and ends when the official (or the last of the team of officials) leaves the Contest site.

- The Contest site is defined as premises on which the competition surface is located and includes the entirety of the premises and parking areas.

When the Supplemental Disqualification implicates a contestant, and in addition to the two Contests disqualification, the contestant may not return to competition representing the contestant's school until the contestant completes the NFHS Sportsmanship program at NFHSLearn and provides a certification of completion of this program to the student's Principal and the Principal submits the certificate to the PIAA District Sports Chairman.



SUPPLEMENTAL DISQUALIFICATIONS

Finally, a Coach and/or Team personnel disqualified under this provision may not return to competition representing the Coach's/Team personnel's school until the Coach/Team personnel complete the NFHS Sportsmanship program and Teaching and Modeling Behavior program at NFHSLearn (online) and provides a certification of completion of these two programs to the Coach's/Team personnel's Principal and the Principal submits the certification to the PIAA District Sport Chairman.



EXAMPLES >>>>>

- Situation: During a junior varsity soccer game a player from team ABC commits a handball violation in the box.
 - Ruling: The referee properly issues a red card and escorts the player to the sideline. The referee also informs the coach of the reason for ejection. The referee must file the Disqualification Report within 24 hours and the player must sit out the next junior varsity contest...
 - This is a standard one game sit out disqualification penalty.

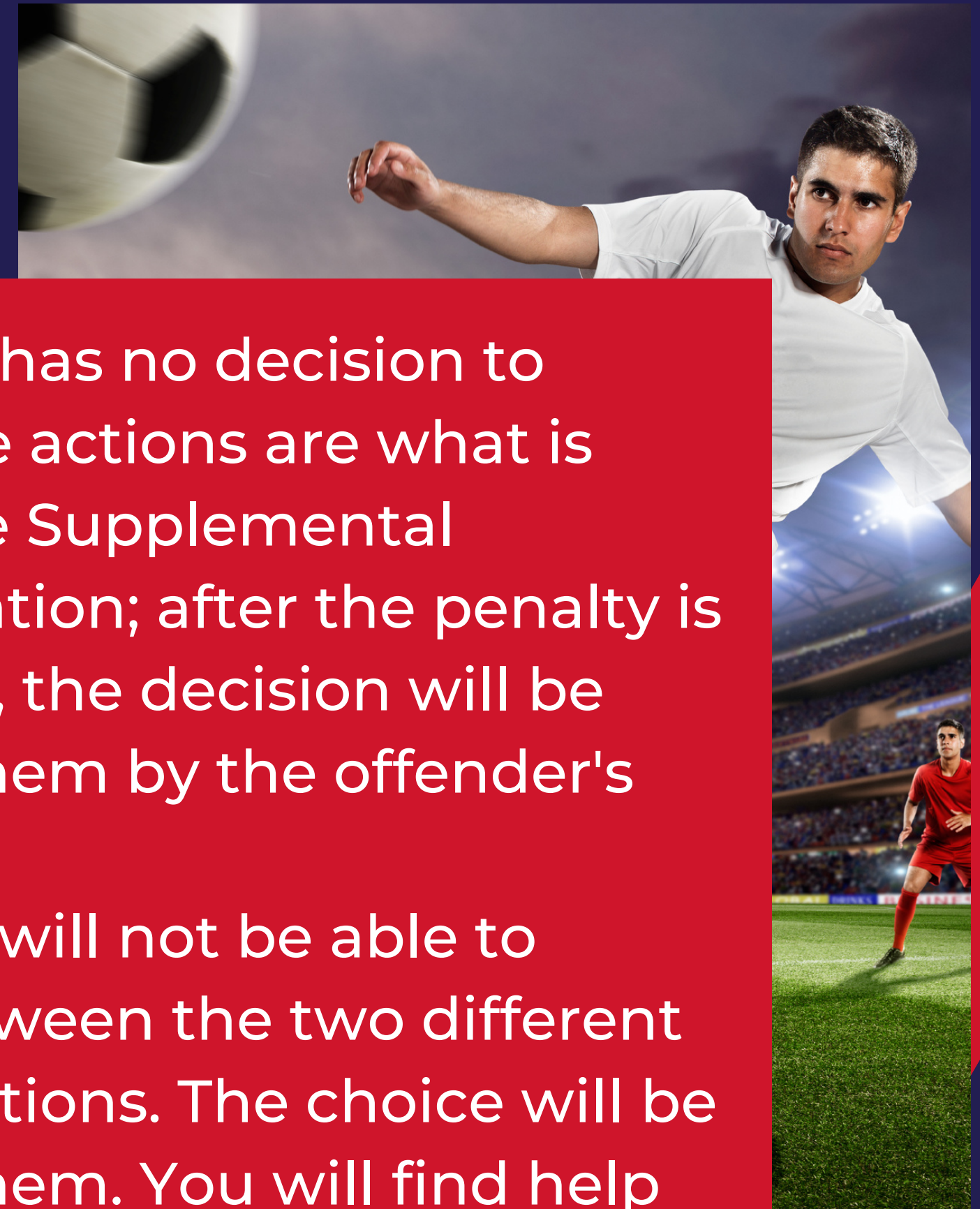


EXAMPLES >>>>>

- Situation: During the boys varsity soccer match, Player A1 is taken down with a legal tackle by Player B1. Player A1 feels that a foul should have been called and jumps from the ground and yells at the nearest official saying, “Hey Ref, you suck.”
 - Ruling: The official must show the red card and eject Player A1. The official must then inform Player A1’s head coach of the ejection and the fact that it is a Supplemental Disqualification due to the foul language directed at the official. The ejecting official must file the Supplemental Disqualification report within 24 hours on the player, who must sit out the next two varsity contests.



FINAL POINT



Question: On the new 2 game DQ is it going to be the officials' decision if it's a 2 game DQ or the PIAA's after reviewing the report?

Answer: As with the previous 1 game DQ, it is always the decision of the official to eject but the actions of the player or coach will be the deciding factor in whether the Supplemental DQ is used.

- The official has no decision to make. If the actions are what is listed in the Supplemental Disqualification; after the penalty is two games, the decision will be made for them by the offender's actions.
- The official will not be able to choose between the two different disqualifications. The choice will be made for them. You will find help in the Preseason Bulletin on our Chapter website or the PIAA site.





Training Session



THANK YOU

Presented by Dr. Tony Rizzo

